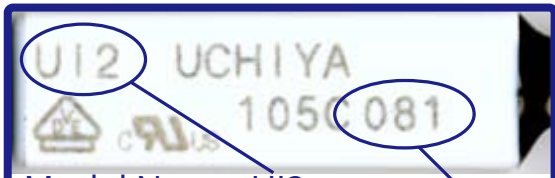


Genuine UI2

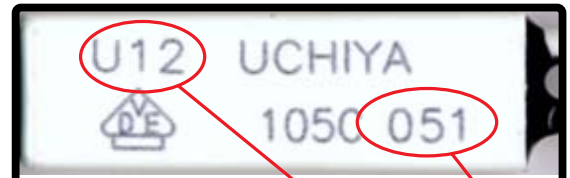
Counterfeit



Model Name: UI2

Lot Number: different per month of production

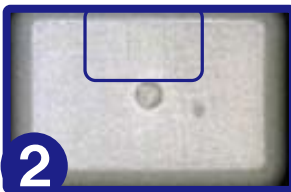
1



Model Name: U12

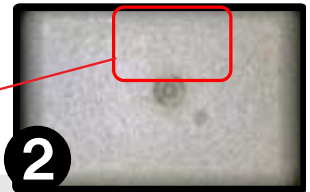
Lot Number: all 051

1



Cavity mark here

2



No Cavity mark

2

Difference by appearance

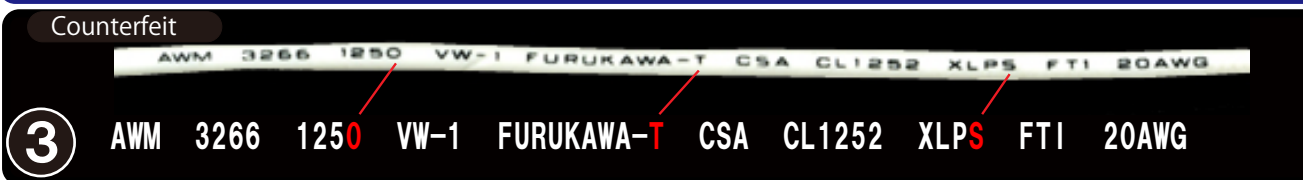
- 1 Colour of Case : Countfeit more yellow tinged
- 2 Case : Counterfeit has no cavity mark
- 3 Lead wire : marking is different

Genuine



3

Counterfeit

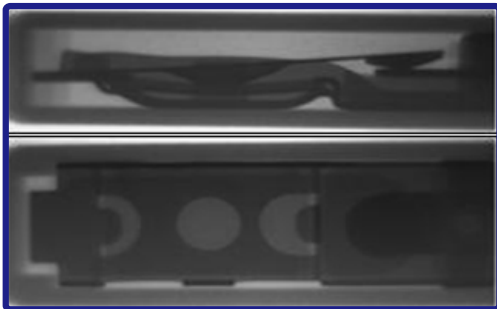


3

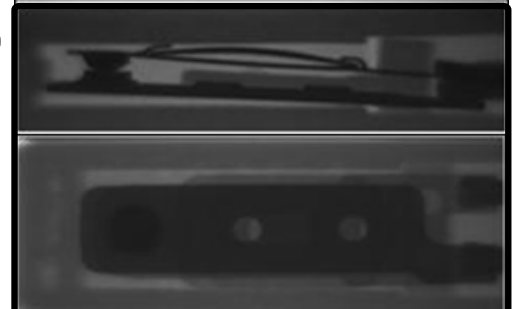
Internal Structure

4 X-ray

4



4



Function

Operating Temperature tends to go higher than upper limit (counterfeits).
 Resetting doesn't synchronize between bimetal and contacts (counterfeits).
 Internal structure: upside down, insufficient insertion of switch mechanism
 which resulted in uneven heat response (some counterfeits).