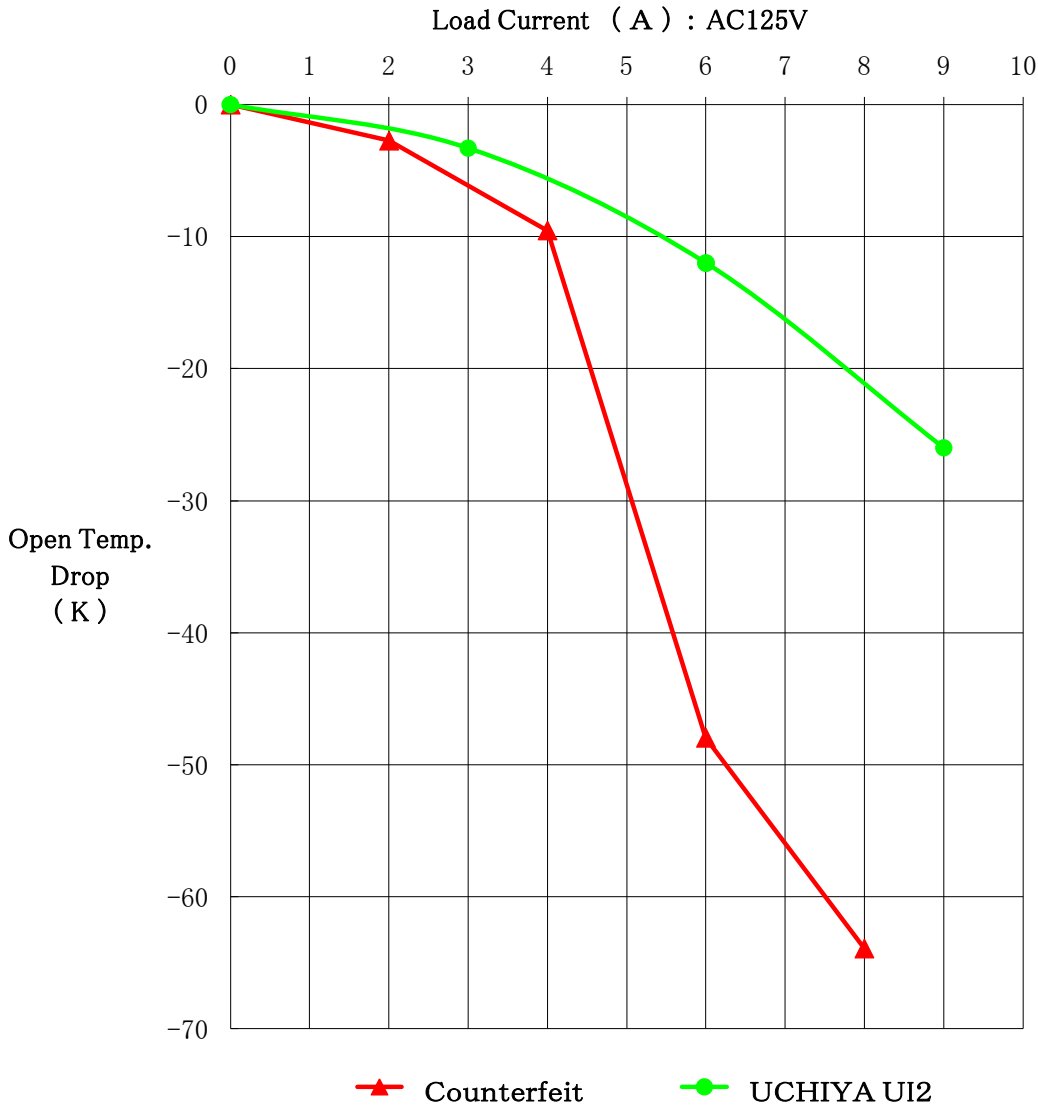


Comparison of Characteristics, UCHIYA UI2 vs. Counterfeit

Open Temperature Drop against Load Current (Ampere)

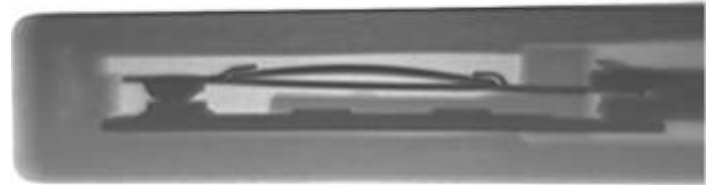


Inside Structure (X-ray)

UCHIYA UI2



Counterfeit



WARNING !

Wrong operation of the counterfeit have been observed when we applied high load current of 6A and 8A to the counterfeit. (Please see the graph to the left.)

When use the counterfeit at load of 4A or above, it might cause wrong operation at lower temperature than intended.